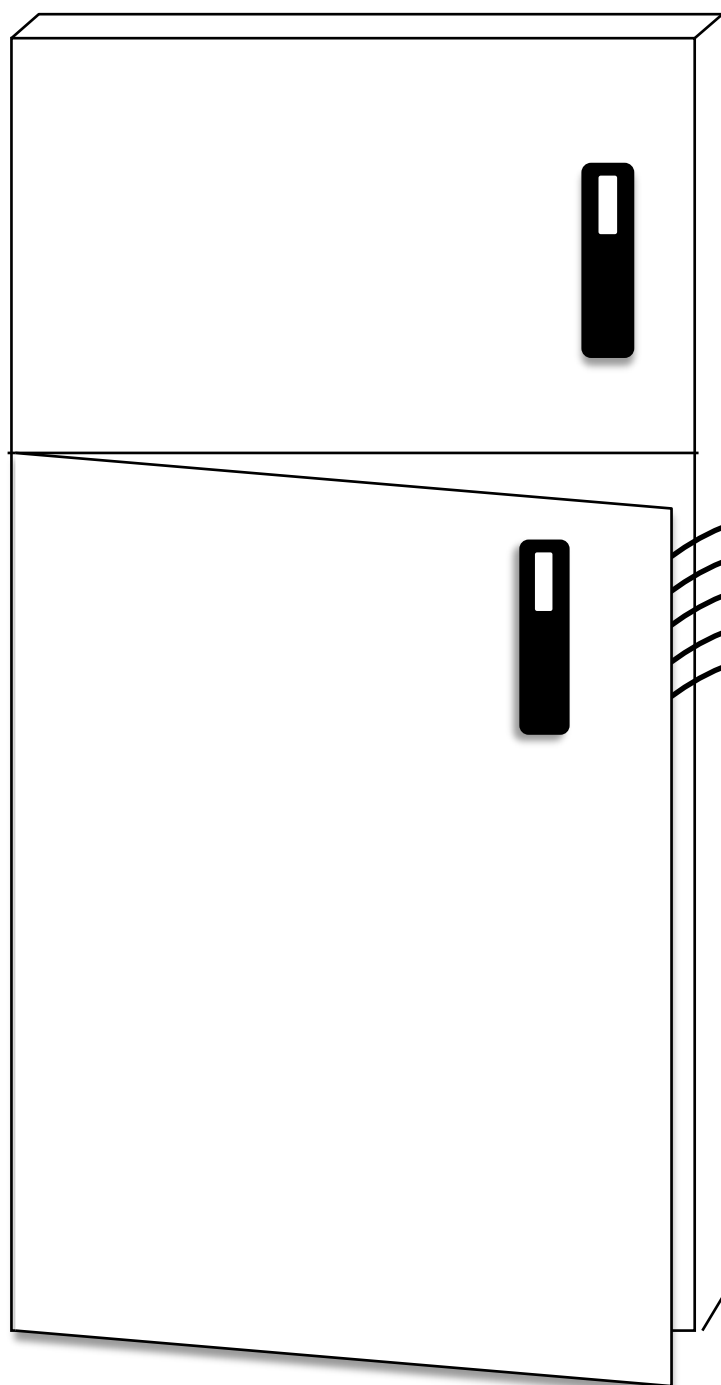
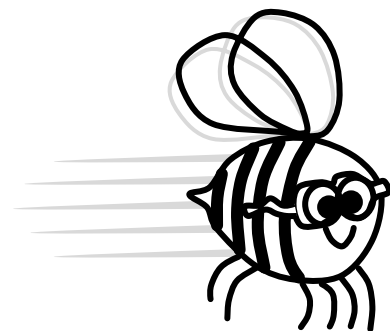


# NMPAT Brass *Express!*



## *"The Fridge"*

Brass Express extension book

[www.NMPAT.co.uk/brass](http://www.NMPAT.co.uk/brass)

# The Fridge

(where you keep the cool tunes!)

## Fantastic!



## One, two, three. Listen to me!



## Amy's Tune



## Nice Cup of Tea



## Hot Cross Buns



### Bunny Ears



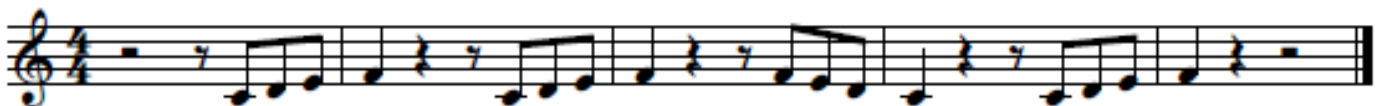
### Shh!



### Silver Surfer



### Hello-ello



### Carrots and Peas



### We Will Rock You



# Ghostbusters



# Who's a Monster?



## Chocolate Chip Ice Cream

Musical notation for 'Chocolate Chip Ice Cream' in 4/4 time. The piece consists of three staves of music. The first staff starts at measure 1 and ends at measure 6. The second staff starts at measure 7 and ends at measure 11. The third staff starts at measure 12 and ends at measure 16. The melody is simple, using quarter and eighth notes.

## Egg-mazing

Musical notation for 'Egg-mazing' in 4/4 time. The piece consists of four staves of music. The first staff starts at measure 1 and ends at measure 7. The second staff starts at measure 8 and ends at measure 13. The third staff starts at measure 14 and ends at measure 18. The fourth staff starts at measure 19 and ends at measure 23. The melody is simple, using quarter and eighth notes.

## Soft Kitty

Musical notation for 'Soft Kitty' in 4/4 time. The piece consists of three staves of music. The first staff starts at measure 1 and ends at measure 6. The second staff starts at measure 7 and ends at measure 13. The third staff starts at measure 14 and ends at measure 19. The melody is simple, using quarter and eighth notes.

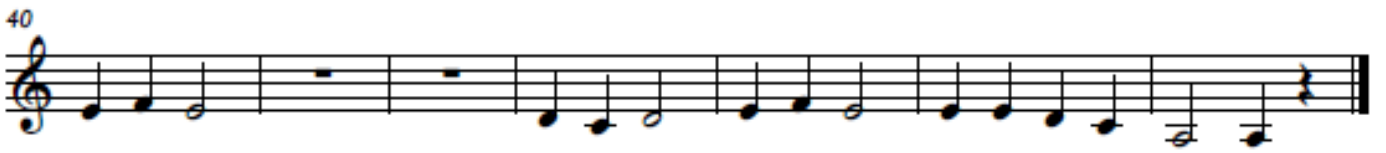
# Zigzogs



# Twink



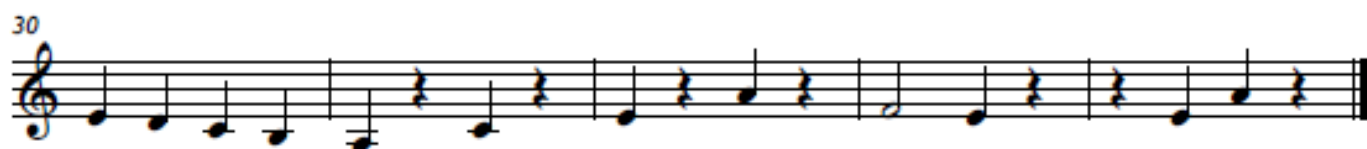
## Zdraveite



## Bread and Butter with Jam



# Big Foot



# Bounce

